



ENDGAME STUDIES

Combining beauty and practicality, the Endgame Study is one of the unique and subtle wonders of the Royal Game. **The Chess Cafe** is pleased to present, on a weekly basis, a selected endgame study for your enjoyment.



The Complete Studies of Genrikh Kasparyan

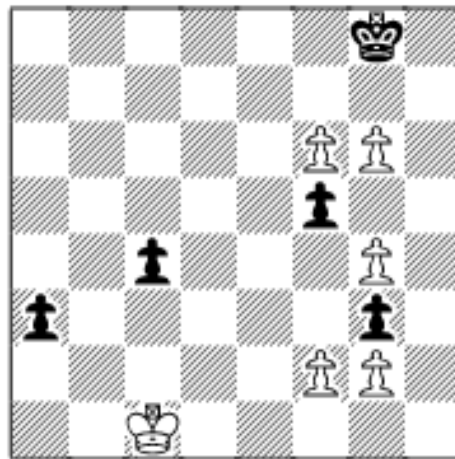
A.J. Roycroft, editor

This 300+ page softcover edition contains all known

Unless specifically designated otherwise, it is always White to move. Unlike problems, studies usually do not require a solution in a pre-determined number of moves. Simply look for the best moves and replies to work out the win or draw. And don't be discouraged if at first you don't succeed - working out the solution will be satisfying - even instructive!

The current study is presented immediately following. Items in our Archives, including this week's selection, are available for you to download.

**The solution to this week's Endgame Study
may be found farther down the page.**



*EG No. 11540
Reprinted with
permission*

Vitaly Kovalenko

*Shakhmatnaya
kompozitsia
1998*

special hon.men.

Win

545 studies by the one of the greatest endgame study composers of all time. Biographical information, photographs and additional material by John Roycroft supplement the studies. The result is one of the outstanding collection of endgame studies ever published. Suggested retail price is \$39.95, but it is offered directly from the publisher at the special price of **\$29.95**. For more ordering information, we invite you to visit [The Chess Cafe Bookstore](#).



If you are interested in endgame studies, look into the premier international endgame study magazine, EG. To subscribe to EG, (four issues per year, in English), send 35 Dutch guilders to:

H. Benak, Kamperfoeliezoom 50, 2353 RS Leiderdorp, The Netherlands. Email: benak@tip.nl . In the U.S., subscriptions are \$22 and may be sent (and are payable) to: Phil Manning 2890 Lee Road, Shaker Hts., Ohio 44120 USA E-mail: p.manning@csu-e.csuohio.edu

Solution to This Week's Endgame Study

1.f3/i c3 2.Kbl, with: **2...fxg4 3.f4 Kf8 4.f7/ii Kg7 5.f5 Kf8 6.f6 a2+ 7.Kxa2 c2 8.g7+ Kxf7 9.Kb2** wins, or **2...f4 3.g7/iii Kf7 4.g5 Kg8 5.g6/iv a2+ 6.Kxa2 c2 7.f7+ Kxg7 8.Kb2** wins.

i) 1.f4? c3 2.Kbl fxg4 3.f5 Kf8 4.f7 Kg7 5.f6+ KPS, with a reciprocal zugzwang to please Black rather than White: 6.g7+ Kxf7. And if 1.fxg3? c3 2.Kbl fxg4 - naturally!

ii) 4.f5? Kg8 5.f7+ Kg7, and having the move is no help to White.

iii) 3.g5? Kf8 4.g7+ Kf7 5.g6+ Kg8. It's getting familiar.

iv) Echo. The last few moves are familiar.

"Prokop's old idea shown here with pawns only."

*This column is available in **Chess Cafe Reader** format. Click [here](#) for more information.*



[\[The Chess Cafe Home Page\]](#) [\[Book Reviews\]](#) [\[Bulletin Board\]](#) [\[Columnists\]](#)
[\[Endgame Studies\]](#) [\[The Skittles Room\]](#) [\[Archives\]](#)
[\[Links\]](#) [\[Online Bookstore\]](#) [\[About The Chess Cafe\]](#) [\[Contact Us\]](#)

Copyright 2001 CyberCafes, LLC. All Rights Reserved.
"The Chess Cafe®" is a registered trademark of Russell Enterprises, Inc.