



ChessCafe.com



## ENDGAME STUDIES

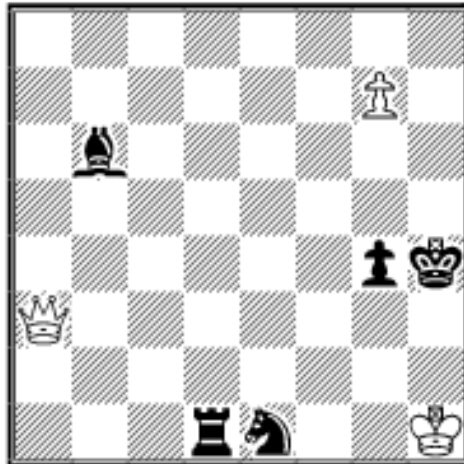
Combining beauty and practicality, the Endgame Study is one of the unique and subtle wonders of the Royal Game. **The Chess Cafe** is pleased to present, on a weekly basis, a selected endgame study for your enjoyment.



Unless specifically designated otherwise, it is always White to move. Unlike problems, studies usually do not require a solution in a pre-determined number of moves. Simply look for the best moves and replies to work out the win or draw. And don't be discouraged if at first you don't succeed - working out the solution will be satisfying - even instructive!

The current study is presented immediately following. Items in our Archives, including this week's selection, are available for you to download.

**The solution to this week's Endgame Study may be found farther down the page.**



*EG No. 13183  
Reprinted with  
permission*

B. Sidorov

2001 Shanshin-40JT  
2nd/3rd comm  
2001

*Win*

**The Complete  
Studies of Genrikh**

## Kasparyan

A.J. Roycroft, editor

This 300+ page softcover edition contains all known 545 studies by the one of the greatest endgame study composers of all time. Biographical information, photographs and additional material by John Roycroft supplement the studies. The result is one of the outstanding collection of endgame studies ever published. Suggested retail price is \$39.95, but it is offered directly from the publisher at the special price of **\$29.95**. For more ordering information, we invite you to visit [The Chess Cafe Bookstore](#).



guilders to:

If you are interested in endgame studies, look into the premier international endgame study magazine, EG. To subscribe to EG, (four issues per year, in English), send 35 Dutch

H. Benak, Kamperfoeliezoom 50, 2353 RS Leiderdorp, The Netherlands. Email: [benak@tip.nl](mailto:benak@tip.nl) . In the U.S., subscriptions are \$22 and may be sent (and are payable) to: Phil Manning 2890 Lee Road, Shaker Hts., Ohio 44120 USA E-mail: [p.manning@csu-e.csuohio.edu](mailto:p.manning@csu-e.csuohio.edu)

---

### Solution to This Week's Endgame Study

Black threatens Nc2+; so: **1 Qe7+ Kh3 2 Qe2 Nd3+ 3 Qxd1 Nf2+ 4 Kg1 Se4+/i 5 Kf1 Sg3+ 6 Ke1 Ba5+ 7 Qd2 Bxd2+ 8 Kd1** (8 Kxd2? Ne4+) and **9 g8Q** wins.

**i)** 4...Nxd1+ 5 Kf1 Ne3+ 6 Ke2 g3 7 g8Q g2 8 Kf3 Kh2 9 Qh7+ Kg1 10 Qb1+ Kh2 11 Qxb6 g1Q 12 Qh6#

"Textbook realisation of an advantage in material."

*This column is available in **Chess Cafe Reader** format. Click [here](#) for more information.*

---



[\[The Chess Cafe Home Page\]](#) [\[Book Reviews\]](#) [\[Bulletin Board\]](#) [\[Columnists\]](#)  
[\[Endgame Studies\]](#) [\[The Skittles Room\]](#) [\[Archives\]](#)  
[\[Links\]](#) [\[Online Bookstore\]](#) [\[About The Chess Cafe\]](#) [\[Contact Us\]](#)

Copyright 2001 CyberCafes, LLC. All Rights Reserved.  
"The Chess Cafe®" is a registered trademark of Russell Enterprises, Inc.